

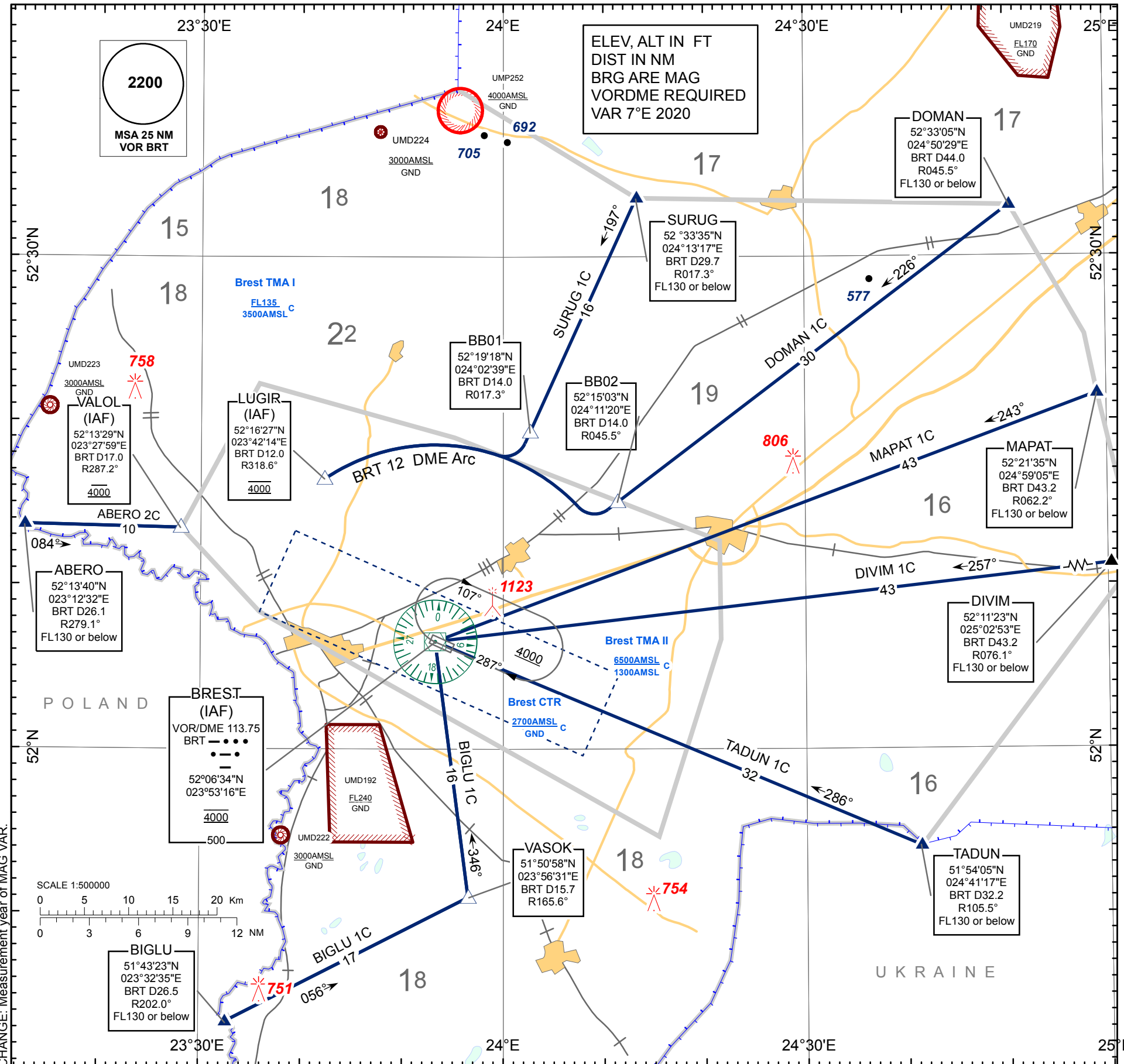
STANDARD ARRIVAL CHART
INSTRUMENT (STAR) - ICAO

TRANSITION LEVEL: by ATC
TRANSITION ALTITUDE: 6000

Alt set: - hPa (mm on req)
- QNH (QFE on req)

TWR 127.700
MET 136.525 (EN)
118.225 (RUS)

ABERO 1C, BIGLU 1C, DIVIM 1C
DOMAN 1C, MAPAT 1C, SURUG 1C
TADUN 1C



STANDARD ARRIVAL CHART INSTRUMENT (STAR) ROUTES
BREST RWY 11

STAR NAME	ROUTE
ABERO 2C	ABERO TWO CHARLIE After passing ABERO proceed on 084° track to VALOL (IAF). Cross VALOL (IAF) at 4000 AMSL.
BIGLU 1C	BIGLU ONE CHARLIE After passing BIGLU proceed on 056° track to VASOK, intercept BRT VOR R-166° inbound to BRT (IAF). Cross BRT (IAF) at 4000 AMSL.
DIVIM 1C	DIVIM ONE CHARLIE After passing DIVIM intercept BRT VOR R-076° inbound to BRT (IAF). Cross BRT (IAF) at 4000 AMSL.
DOMAN 1C	DOMAN ONE CHARLIE After passing DOMAN intercept BRT VOR R-046° inbound to BB02. Turn RIGHT along BRT DME D12 arc to LUGIR (IAF). Cross LUGIR (IAF) at 4000 AMSL.
MAPAT 1C	MAPAT ONE CHARLIE After passing MAPAT intercept BRT VOR R-062° inbound to BRT (IAF). Cross BRT (IAF) at 4000 AMSL.
SURUG 1C	SURUG ONE CHARLIE After passing SURUG intercept BRT VOR R-017° inbound to BB01. Turn RIGHT along BRT DME D12 arc to LUGIR (IAF). Cross LUGIR (IAF) at 4000 AMSL.
TADUN 1C	TADUN ONE CHARLIE After passing TADUN intercept BRT VOR R-106° inbound to BRT (IAF). Cross BRT (IAF) at 4000 AMSL.

CHANGE: Measurement year of MAG VAR.

THIS PAGE INTENTIONALLY LEFT BLANK